

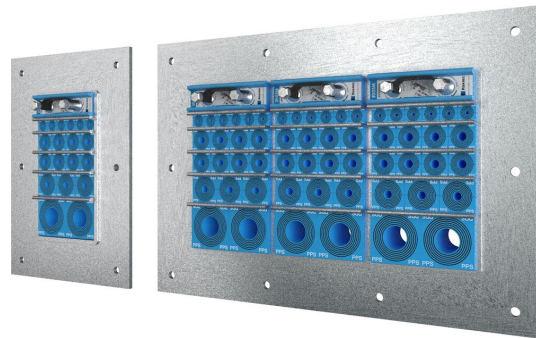


플라스틱 도관용 Roxtec GH 관통 장비

플라스틱 도관용 내화 관통 장비.

플라스틱 도관용 Roxtec GH는 내화 등급이 필요한 강철 또는 샌드위치 벽/바닥과 같은 구조물에 볼트로 고정하기 위한 관통 장비입니다. 직사각형 강철 프레임을 사용하면, 케이블 밀도가 높은 도관을 라우팅할 수 있습니다. 플라스틱 도관용 Roxtec RM PPS 씰링 모듈에는 설치를 단순화하기 위해 해당 NW 크기 번호가 표시되어 있습니다. RM PPS 모듈은 동일한 프레임에 도관과 케이블을 혼합하여 일반 RM 모듈과 결합할 수 있습니다.

- 유지 및 검사 용이
- 예비 공간 포함 제공



제품 특징점



내화



IP/UL NEMA

설치 구조



샌드위치



금속

장착 유형



볼트체결

등급 및 인증

화재

- EN 45545 E60에 따른 E/EI 등급

강도

- IP 66/67

프레임 치수

mm/kg

아래의 프레임 변화는 제한된 선택입니다. 프레임 및 구성의 전체 범위를 보려면 [roxtec.com](https://www.roxtec.com)을 방문하십시오.

구성	프레임 입구	모듈설치공간	외부 치수 WxHxD	홀 치수 w x h	무게	Art. 번호
GH 6x1 GALV	1	120 x 180	252.5 x 350 x 60	148(+5/-5) x 245(+5/-5)	4.4	5GH0000007882
GH 6x2 GALV	2	120 x 180	383 x 350 x 60	278(+5/-5) x 245(+5/-5)	7.5	5GH0000007828
GH 6x3 GALV	3	120 x 180	513.5 x 350 x 60	409(+5/-5) x 245(+5/-5)	10.4	5GH0000008108
GH 6x1 AISI316	1	120 x 180	252.5 x 350 x 60	148(+5/-5) x 245(+5/-5)	4.9	5GH0000008261
GH 6x2 AISI316	2	120 x 180	383 x 350 x 60	278(+5/-5) x 245(+5/-5)	7.3	5GH0000008179
GH 6x3 AISI316	3	120 x 180	513.5 x 350 x 60	409(+5/-5) x 245(+5/-5)	10.1	5GH0000009292

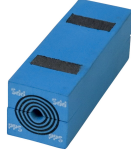


씰링 컴포넌트 데이터

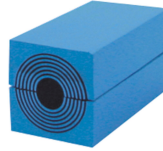
씰링 컴포넌트



윤활제



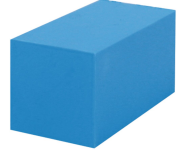
RM PPS 모듈(Multidiame



RM 모듈(Mult idiameter™



Wedge 및 We



RM 솔리드 모듈



스태이플레이트

자세한 내용은 [roxtec.com](https://www.roxtec.com)을 방문하십시오.

The product information provided by Roxtec does not release the purchaser of the Roxtec system, or part thereof, from the obligation to independently determine the suitability of the products for the intended process, installation and/or use. Roxtec gives no guarantee for the Roxtec system or any part thereof and assumes no liability for any loss or damage whatsoever, whether direct, indirect, consequential, loss of profit or otherwise, occurred or caused by the Roxtec systems or installations containing components not manufactured by an authorized manufacturer and/or occurred or caused by the use of the Roxtec system in a manner or for an application other than for which the Roxtec system was designed or intended. Roxtec expressly excludes any implied warranties of merchantability and fitness for a particular purpose and all other express or implied representations and warranties provided by statute or common law. User determines suitability of the Roxtec system for intended use and assumes all risk and liability in connection therewith. In no event shall Roxtec be liable for indirect, consequential, punitive, special, exemplary or incidental damages or losses. The Roxtec products are offered and sold in accordance with the conditions of the Roxtec General Terms of Sales. The latest version of the Roxtec General Terms of Sales can be downloaded from <https://www.roxtec.com/en/about-us/about-roxtec/general-terms-of-sales/> We reserve the right to make changes to the product and technical information without further notice. Any errors in print or entry are no claims for indemnity. The content of this publication is the property of Roxtec International AB and is protected by copyright. This document was generated on: 2024-04-25